

**2014 Floods Impact on the Mine
Suspected Areas in South East Europe –
Regional Cooperation and Lessons
Learned**



Emergency Response in Croatia

- There was no direct endangerment of settlements from mines due to the fact that in previous years the removal of mines from the vicinity of inhabited areas was one of the demining priorities.
- An initial emergency survey of all 3 MSAs was conducted by the Croatian Mine Action Centre (CROMAC) in the aftermath of flooding and all damaged/destroyed marking was replaced.
- CROMAC immediately performed mine risk education (MRE) activities on flooded areas.
- Due to a large number of people working on the terrain rehabilitation (army, police, National Protection and Rescue Directorate, veterinary services, firemen, Croatian Red Cross, Croatian Mountain Rescue Service etc.), CROMAC prepared 20.000 leaflets which were distributed throughout the flood-stricken areas.

Prema evidentiranim zapisnicima na poplavljenom području VS županije mogu se pronaći sljedeća minsko eksplozivna sredstva (ME S)

PROTUPJEŠAČKE MINE:



PMA-1A



PMA-2



PMA-3



PROM-1

PROTUDOKLOPNE MINE:



TMM-1



TMA-3



Tabla minske opasnosti



MJERE SIGURNOSTI I UPOZORENJA

POŠTOVANI GRAĐANI REPUBLIKE HRVATSKE,
PRI POVRAJKU I OBNOVI VAŠIH DOMOVA VODITE BRIGU
O SVOJJOJ SIGURNOSTI:

**NE ULAZITE U OZNAČENA MINSKA POLJA I MINSKI
SUMNJIVA PODRUČJA !**

POŠTUJTE ZNAKOVE OPASNOSTI OD MINA !

**NE UKLANJAJTE ZNAKOVE OPASNOSTI ! BUDITE
ODGOVORNI PREMA DRUGIMA !**

**NE DIRAJTE NEPOZNATE PREDMETE I EKSPLOZIVNE
OSTATKE RATA !**

**OBILJEŽITE MJESTO PRONALASKA MES-a ili NUS-a !
OBAVJESTITE POLICIJU NA BROJ 192 ILI SUSTAV ŽURNE
POMOĆI NA BROJ 112 !**

RAZMINIRANJE PREPUŠTITE STRUČNJACIMA !

**POLJOPRIVREDNICI, ZEMLJA JE VAŠE VELIKO BLAGO,
ALI ŽIVOT JE DALEKO NAJVEĆE !**

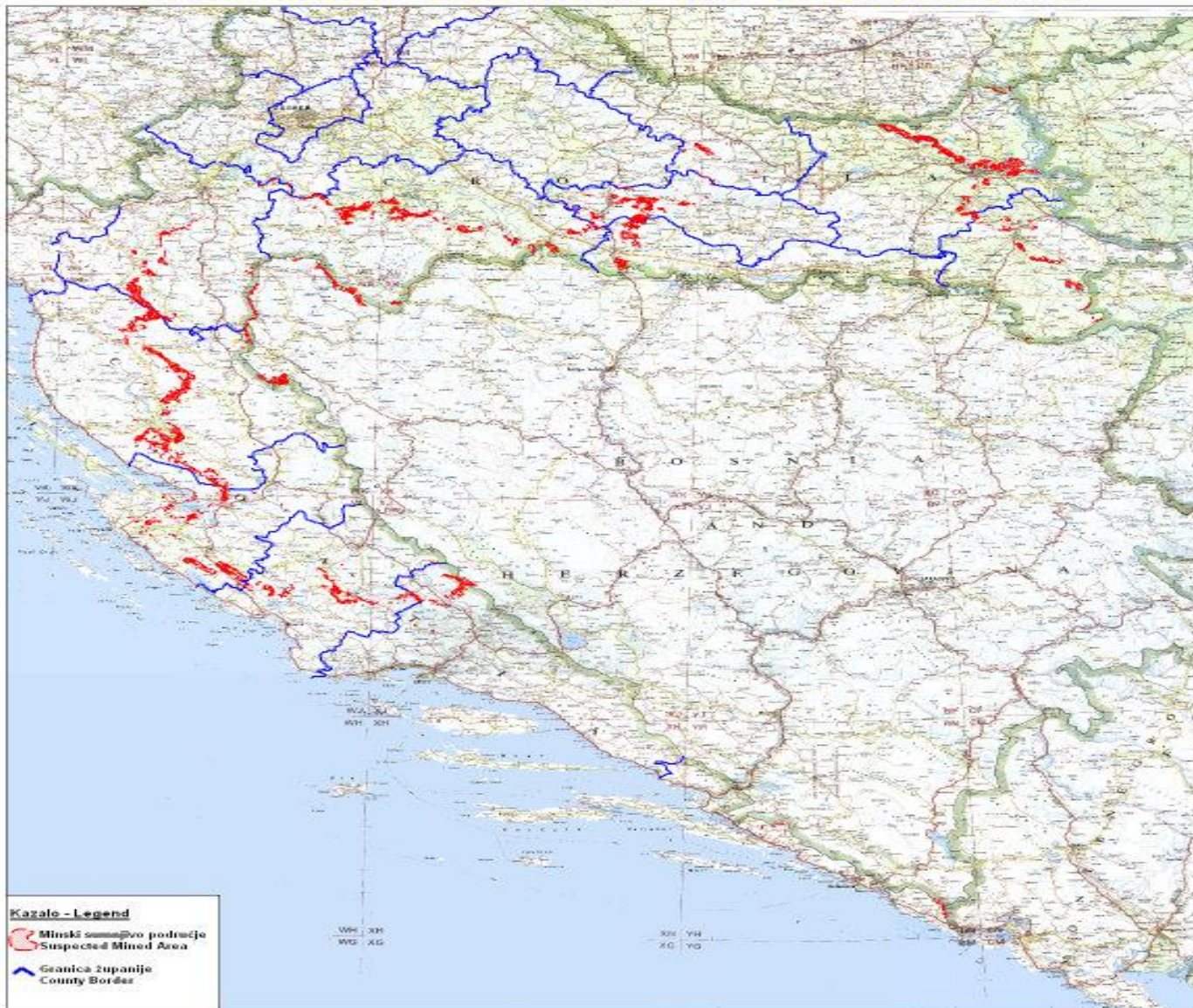
BUDITE SVJESNI MINA !

BUDITE SVJESNI MINSKE OPASNOSTI !



Sve detaljne informacije o minama, minski sumnjivom području
i obilježnosti istog mogu se dobiti na web stranicama HCR-a
: <https://misportal.hcr.hr> i na tel: 044-554-100, 031 250-821

HRVATSKA - CROATIA MINSKI SUMNJIVA PODRUČJA - MINE SUSPECTED AREA



UPOZORENJE

Ova karta prikazuje područja visokog rizika od mina i neeksplozivnog ratnog materijala.

WARNING:

This map shows the area at greatest risk from possible contamination of mines and unexploded ordnance.

Kolovoz 2013. / August 2013.

Actions Taken and Lessons Learned

- On 23 May 2014 CROMAC, GOMA and CROMAC-CTDT together with Serbian Mine Action Centre (SERMAC), BH Mine Action Centre (BHMAL) and Regional Centre for Underwater Demining in Montenegro (RCUD) established *Regional Expert Team* with the purpose of exchanging all relevant information which could be of use in alleviating the consequences of recent flooding on MSAs in three countries.
- National MACs agreed they will take steps to develop new Standard Operating Procedures (SOPs) for handling these types of situations.
- The current situation has shown again the extent of the danger and obstacle mines pose to normal everyday life of peoples and economies; MACs therefore each within their scopes of work pointed to the serious lack of demining funds in the region.

Actions Taken and Lessons Learned (cont.)

- *Mine Action After the Floods: Regional Synergy in Emergency Response, Technology Development and Capacity Building* – project launched in Sarajevo on 15 September 2014
- **Key players:** members of RET, Faculty of Civil Engineering Sarajevo, Royal Military Academy Brussels, Faculty of Geodesy Zagreb.
- **Main goals**
 1. Provide support to urgent actions (in the first three months) of MACs by aerial resurvey and by establishment of regional information network for mine action after natural disaster.
 2. Develop initial models for spatial estimation of new hazardous risk caused by the shifting of landmines and UXOs to wider areas which had not been mine suspected before the disaster.
 3. Develop and validate recommendations and SOPs for mine action after the natural disaster.